

BLUE RIDGE TIMBERWRIGHTS

The Heart Pine



The Heart Pine is a 2,500 square foot home (excluding porches and basement), designed with retirement living in mind.

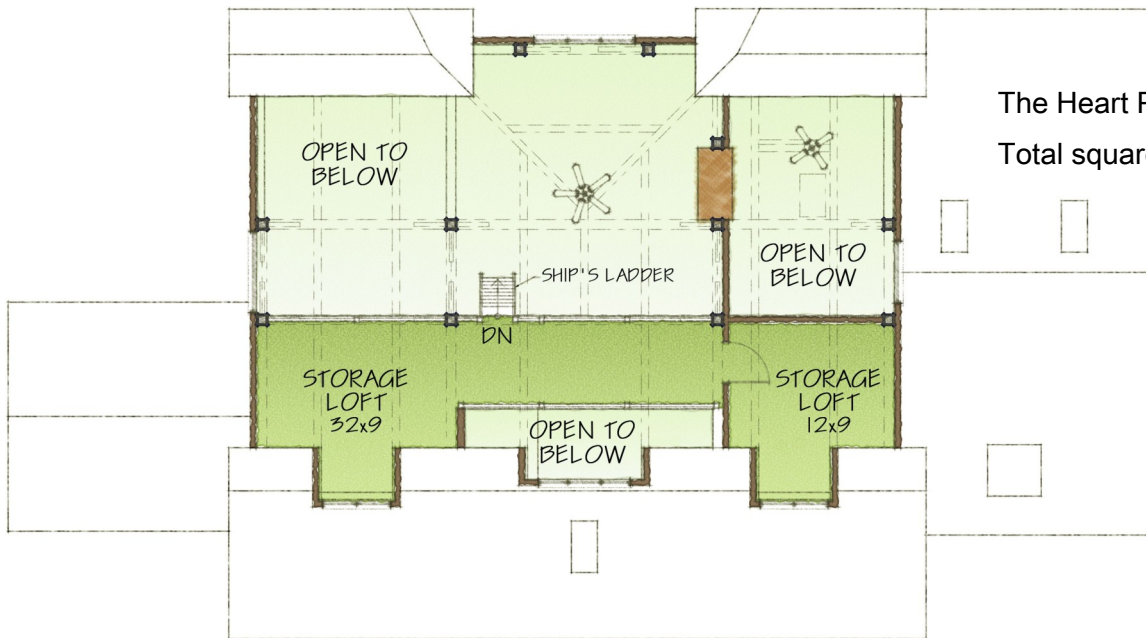
The primary rooms reside on the main level, and the driveway allows access directly to the front door. The great room has unique access to the bridge and loft areas above—a ships ladder powered by an electrical winch. The formal dining area and kitchen lead into the cozy breakfast nook with screened porch. The study and master bedroom are enhanced with skylights.

An optional basement provides additional living space, as well as a two-car garage. The 1,000-square-foot finished area includes two bedrooms connected by a bath, a kitchenette and a sitting area that leads to the patio.

Choose your own timber and finishing from a wide range of options.

P.O. Box 30 ▪ Christiansburg VA 24068
540-382-1102 fax 540-382-8039
Email: info@brtw.com www.brtw.com





The Heart Pine Second Floor
 Total square footage as shown is 400.

SECOND FLOOR



The Heart Pine First Floor
 Total square footage as shown is 2,000
 (excluding porches).

FIRST FLOOR

Blue Ridge Timberwrights
 P.O. Box 30 • Christiansburg VA 24068
 540-382-1102 fax 540-382-8039
 Email: info@brtw.com www.brtw.com

